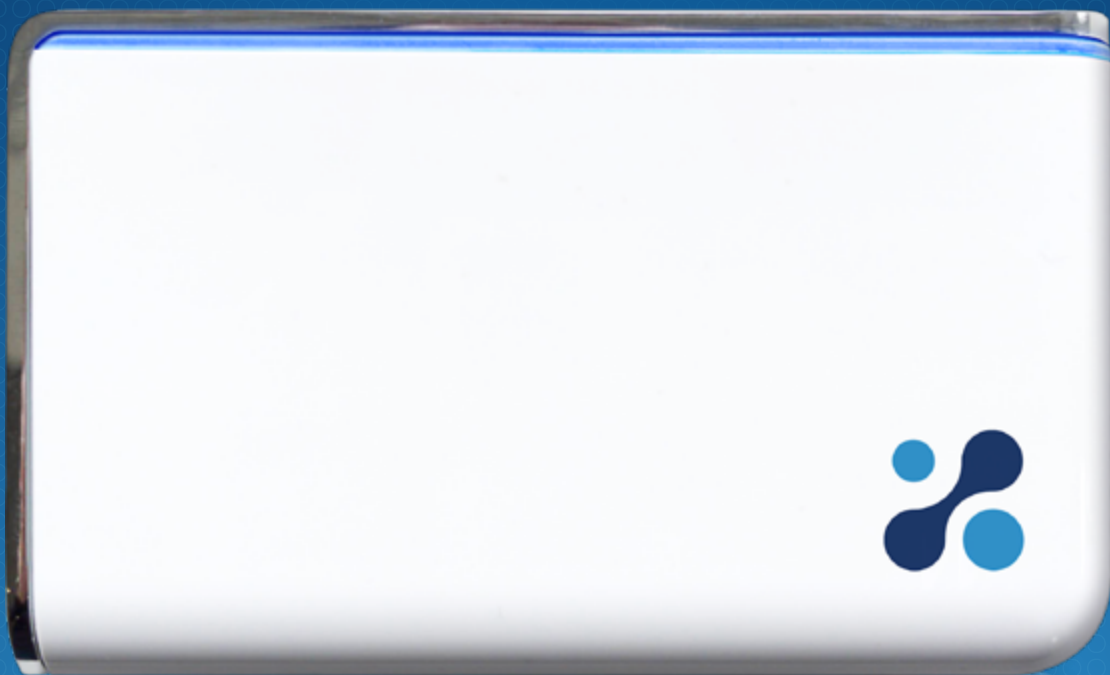


aethair | AQ

Indoor Air Quality Monitoring





The Indoor Monitoring Solution

Aethair IAQ provides real-time indoor air quality monitoring for healthier spaces and regulatory compliance. Using calibrated sensors and live analytics, it delivers continuous visibility, real-time alerts, and actionable indoor air quality data. Monitor performance, meet standards, and make informed operational decisions with confidence.

Real data. Real insight. Actionable outcomes.



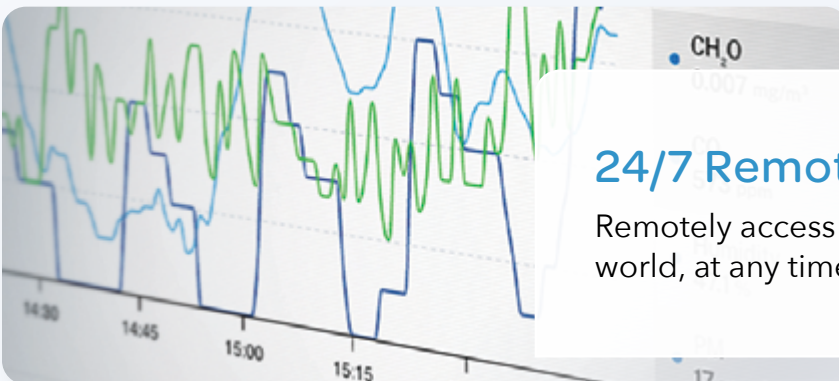
Devices Calibrated for Accuracy

Devices are fully calibrated, allowing immediate deployment, reliable operation, and accurate data.



AI Analysis & Reports

Quickly generate custom environmental data reports in seconds, and ask questions for instant AI insights.



24/7 Remote Data Access

Remotely access real-time data from anywhere in the world, at any time, on our web console, Environet.



Precision-calibrated and certified for reliable, accurate measurement. Aethair IAQ accurately monitors and continuously reports on-site air quality in real-time, enabling effective remediation and informed decision-making.

Aethair IAQ Sensors

CO₂

VOC

PM1

PM2.5

PM10

CH₂O

Pressure

Humidity

Temperature

A New Standard in Indoor Air Quality Monitoring

Transform indoor environments with real-time data. Designed for ease of use, Aethair IAQ delivers continuous insights and supports regulatory compliance with verified, actionable information.

4G LTE Connectivity

Secure global cellular connectivity, eliminating the need for a local network.

Pre-Calibrated Sensors

Calibrated and certified to correlate over 90% with reference instruments.

Continuous Monitoring

Local and cloud storage ensure no data is lost during interruptions or outages.





Generate Reports in Seconds

Create customizable air quality reports in seconds, schedule automated reports, and simplify your reporting process. Quickly organize data, visualize trends, and even configure reports to align with institutional standards and regulations. Aethair Reports deliver clear, actionable insights that save time and support data-driven decisions.

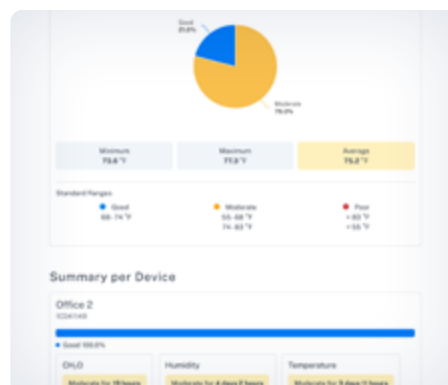
Scheduled Reports

PDF reports automatically delivered to your inbox each day or week.



Data Summaries

Clear breakdowns with per-device summaries, timelines, and alerts.



Extended Analysis

Deeper per-device analysis with graphs and detailed data tables.

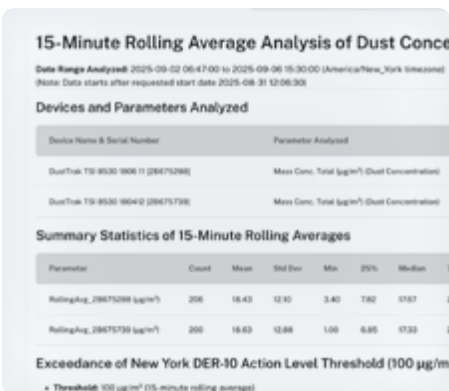


environet | Data Monitoring & Management

Environet is Aethair's cloud platform for real-time environmental data management and analysis. Trusted by enterprises worldwide, it provides secure access to live and historical data, turning it into report-ready intelligence that supports compliance, trend analysis, and actionable decisions.

AI-Powered Analytics

Turn complex data into insights. Ask questions, analyze large datasets, and simplify compliance



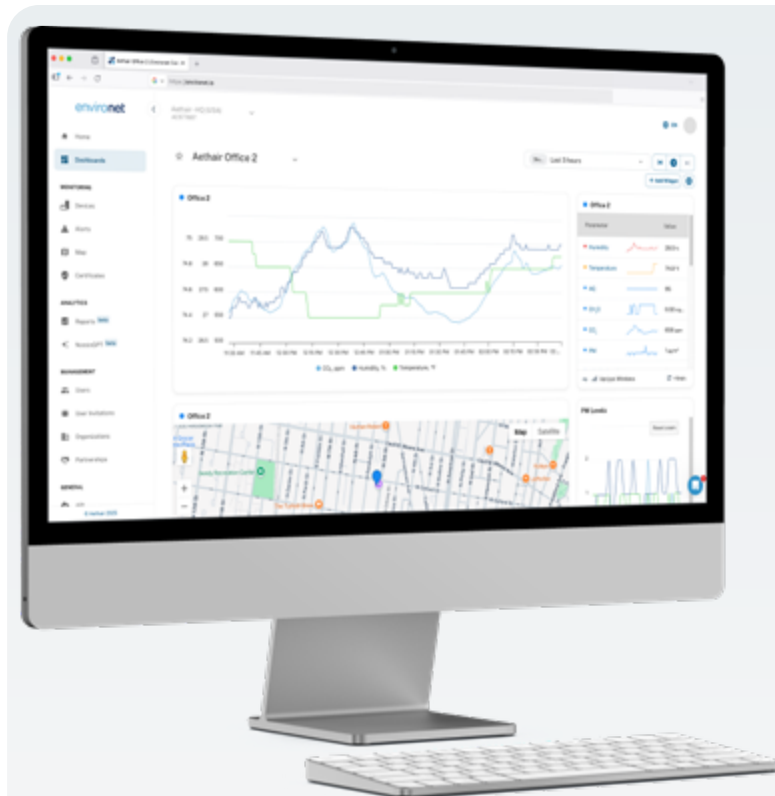
Compliance Made Simple

Quickly generate custom, professional reports. Aethair makes reporting simple, accurate, and fast.



Active Risk Management

AI insights, analytics, and real-time alerts identify risks early. Visualize trends, anticipate issues, and act fast.



Transforming Environmental Data

Environet is an advanced platform for monitoring and managing environmental data, connecting data, alerts, analytics, and reports into a single workflow so teams can act before issues escalate. Users can track parameters, visualize trends, and review full historical records for any device.

- › 24/7 access to real-time conditions
- › AI analysis and reporting tools
- › Trend visualization for critical environments
- › Customizable alerts for safety thresholds

aethair | AQ | Technical Specifications

PM Sensors		PM 1, PM 2.5, PM 10	0.3~1.0; 1.0~2.5; 2.5~10 μm		
		Effective Range	0 - 500 μg/m³		
		Resolution	1 μg/m³		
		Efficiency	98%>=0.5μm		
		Maximum Consistency Error	± 10%		
		Standard Volume	0.1L		
		Gas Sensors		CH ₂ O	Effective Range
Resolution	0.001 mg/m³				
Maximum Consistency Error	± 5%				
CO ₂	Effective Range			400 - 5000 ppm	
	Resolution			1 ppm	
	Maximum Consistency Error			± 50ppm + 2%	
	Single Response Time			< 3 sec.	
	Total Response Time			≤ 25 sec.	
Total VOCs	Range			0 - 1 ppm	
	Resolution			0.05 ppm	
	Maximum Consistency Error			± 15%	
Environmental Sensors				Temperature	Range
		Resolution	0.1 °C		
		Maximum Error	± 0.5° C from 15° - 30° C		
		Humidity	Range	15 - 75% RH	
			Resolution	0.1 %RH	
			Maximum Error	± 2 %RH	
		Barometer	Range	300-1100 hPa	
			Resolution	± 0.12 Pa	
			Maximum Error	± 1.3 Pa	
				Dew Point & Heat Index (Additional Parameters)	
		Communications		Cellular	4G LTE / 3G / 2G
				WiFi	802.11 b/g
Bluetooth	Bluetooth 4.0				
Mesh	Zigbee				
GPS	A-GPS				
Antenna	Built-in (GPRS, 2G/ 3G / 4G, Zigbee, Bluetooth)				
SIM Card	Built-in				
General		Input Voltage	5 VDC (micro-USB)		
		Power	0.6 Watt		
		Operating Temperature	0° - 45° C		
		Accelerometer	16g (13-bit resolution)		
		Dimensions (LxWxD)	4.3in (110mm) x 2.6in (66mm) x 1.2in (30mm)		
		Weight	0.4 Lbs (0.18 kg)		
		Certifications	CE, FCC		

Rev. 1.0-2024.08.12



How can we help?

If you would like to find out more about how we can help you, please give us a call or send us an email.

+1 (267) 225-8487

sales@aethair.io

aethair.io