

aethair PRO for ISO 23875

# Ensuring Cabin Air Quality Compliance for Your Entire Fleet



Aethair Pro is a reliable instrument for monitoring and maintaining cabin air quality across your entire fleet of heavy-duty equipment. With real-time monitoring of cabin pressure, CO<sub>2</sub>, VOCs, and conditions relevant to filtration performance, Aethair Pro ensures that all vehicles remain compliant with ISO 23875, no matter where they operate.

## The Purpose of ISO 23875

ISO 23875 defines engineering controls to maintain safe air quality inside operator cabins. The standard primarily focuses on:

- ▶ **Filtration Efficiency:** Ensuring high-efficiency particulate and gas-phase filtration.
- ▶ **Cabin Pressurization:** Maintaining positive pressure to prevent contaminant ingress.
- ▶ **Real-Time Monitoring:** Continuous measurement of CO<sub>2</sub> levels and cabin pressure.
- ▶ **Operator Safety:** Reducing exposure to hazardous airborne particles and gases.

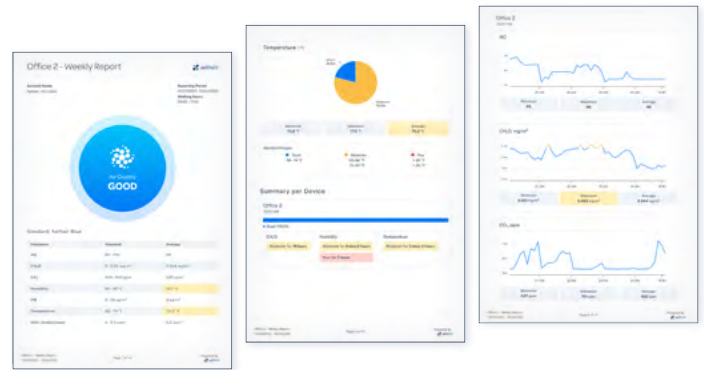
## Key Requirements of ISO 23875

Requirement	Specification
Cabin Pressurization	≥ 20 Pa under normal operation
Particulate Filtration	System requirement: minimum 99% efficiency for PM <sub>2.5</sub> and PM <sub>10</sub>
Gas-Phase Filtration	Protection against VOCs, NO <sub>2</sub> , SO <sub>2</sub> , and other contaminants
CO <sub>2</sub> Monitoring	Required with automatic alerts if levels exceed 5,000 ppm
Recirculation Filtration	Ensures continuous removal of contaminants



# Automated Air Quality Reports

Aethair enables teams to quickly create custom reports using real, continuously collected data. In seconds, users can generate reports that show trends and highlight conditions relevant to job-site safety and cabin air quality. Reports can be configured to align with ISO 23875 requirements, delivering clear, defensible information for compliance and decision-making. Reports can also be automatically generated and emailed on a set schedule, ensuring the right information is available to support audits and ongoing compliance.



## Applications of ISO 23875

INDUSTRY	APPLICATION
Mining	Underground and open-pit operations, compliance with MSHA standards
Construction	Heavy machinery used in dust-prone environments
Agriculture	Protection against pesticide and dust exposure
Forestry	Logging equipment operating in airborne particulate conditions
Industrial Operations	Protecting workers in high-exposure environments

## ISO 23875 Compliance Benefits

### FLEET-WIDE SAFETY

Ensures all vehicles meet air quality standards in real time.

### REGULATORY COMPLIANCE

Supports alignment with occupational health and safety requirements (OSHA, MSHA, EPA)

### EQUIPMENT LONGEVITY

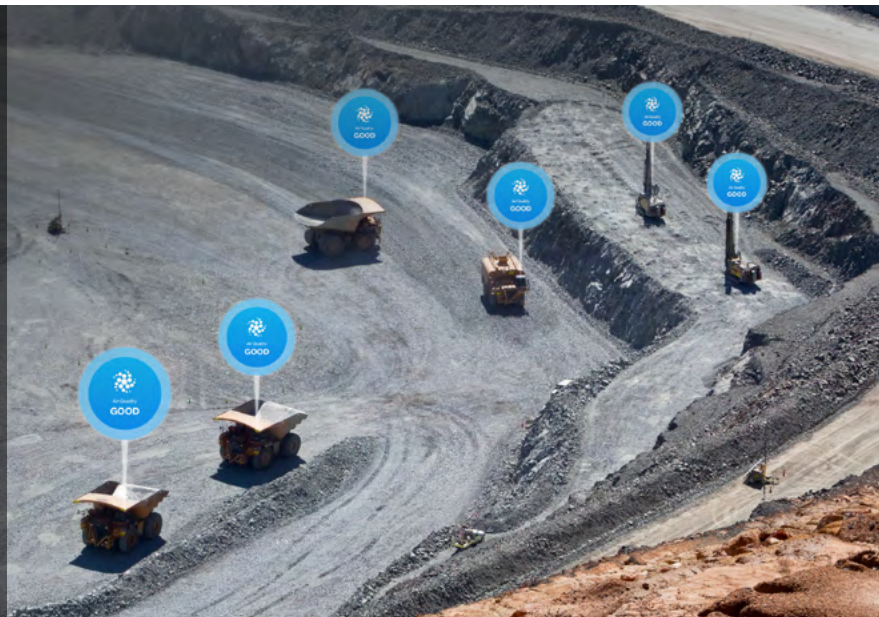
Prevents dust and debris from affecting cabin components.

### OPERATIONAL EFFICIENCY

Minimizes downtime by preventing air quality-related health issues.

## Conclusion

Aethair Pro is the ultimate solution for real-time fleet-wide monitoring of cabin air quality. Whether operating in mines, construction sites, or agricultural fields, it supports compliance with ISO 23875 and provides operators with the highest level of air quality protection. Highly configurable for all air monitoring needs—indoor, outdoor, and on the go—Aethair Pro guarantees a safer, more efficient fleet.



## How can we help you?

If you would like to find out more about how we can help you, please give us a call or send us an email.

Contact Us: +1 (267) 225-8487 [sales@aethair.io](mailto:sales@aethair.io)



See The Air You Breathe  
[aethair.io](https://aethair.io)