



SOLUTIONS FOR

Healthcare

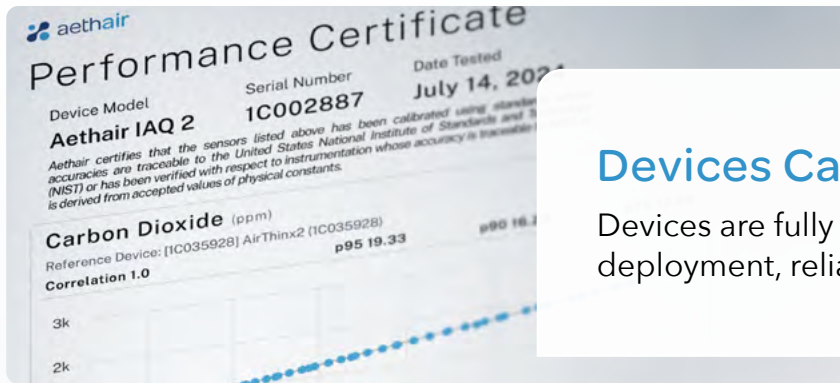




A Smarter Way to Monitor and Manage Healthcare Environments

Aethair delivers environmental intelligence for healthier, safer care spaces. Our monitoring devices and analytics platform provide continuous data to protect patients and staff, improve facility performance, and ensure regulatory compliance. Real analytics reveal risks early, helping clinical and operations teams drive fast, data-backed action

Real data. Real insight. Actionable outcomes.



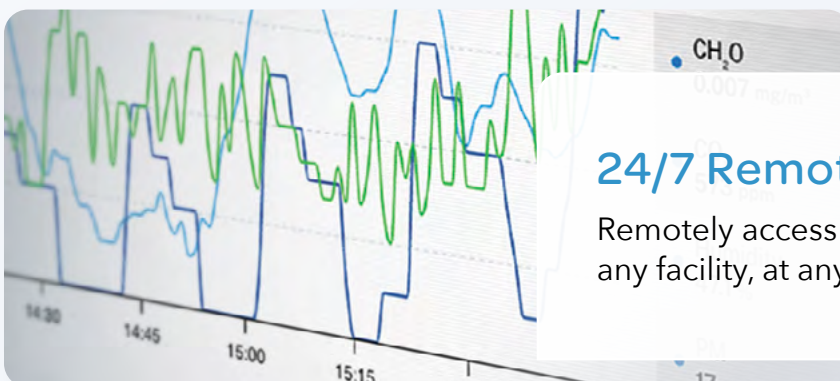
Devices Calibrated for Accuracy

Devices are fully calibrated, allowing immediate deployment, reliable operation, and accurate data.



AI Analysis & Reports

Generate custom data reports in seconds, and get instant AI insights for patient safety and compliance.



24/7 Remote Data Access

Remotely access real-time environmental data from any facility, at any time, on our web console, Environet.

Generate Reports in Seconds

Automatically organize air quality data, schedule automated reports, and visualize trends that matter for infection control and compliance. Configure reports to align with healthcare standards like **CDC** and **WHO** guidelines. Aethair Reports deliver clear, actionable insights that help healthcare teams safeguard patients, ensure compliance, and make data-driven decisions.

Scheduled Reports

Simplify reporting with scheduled PDF reports automatically delivered to your inbox each day or week.



Data Summaries

Reports provide clear breakdowns and visualizations with per-device summaries, timelines, and alerts.

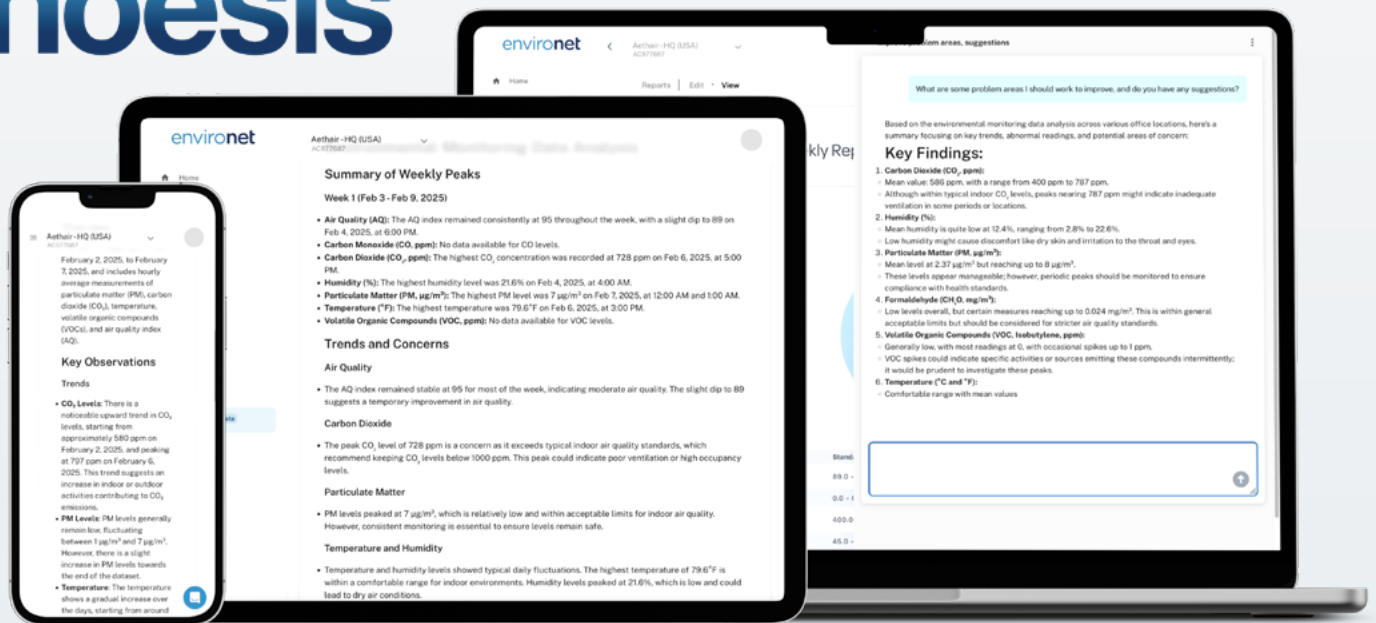


Extended Analysis

Deeper per-device analysis with graphs and detailed data tables that track parameter trends.



noesis



Simplifying EHS and Compliance

Noesis transforms how healthcare teams interact with environmental data, turning it into clear, defensible insights. Ask natural-language questions like, "Which patient rooms exceeded CO₂ thresholds this week?" and get instant answers. Noesis analyzes real-time and historical data to detect ventilation inefficiencies, identify contamination risks, generate compliance-ready summaries aligned with healthcare standards, and even create multi-condition alerts based on your thresholds. The result is **faster, data-driven decisions that protect patient safety, staff health, and operational integrity.**





Precision-calibrated and certified for exceptional accuracy. Aethair IAQ accurately monitors and continuously reports on-site air quality in real-time, enabling effective remediation and informed decision-making.

Aethair IAQ Sensors

CO₂

VOC

PM1

PM2.5

PM10

CH₂O

Pressure

Humidity

Temperature

A New Standard in Healthcare Air Quality Monitoring

Transforms clinical and patient environments with real-time environmental intelligence. Designed for simplicity and reliability, Aethair IAQ delivers continuous insights that help facilities maintain safe air quality, meet healthcare standards, and support infection control with verified, actionable data.

4G LTE Connectivity

Secure global cellular connectivity ensures uninterrupted monitoring across healthcare facilities—no local network required.

Pre-Calibrated Sensors

Calibrated and certified to correlate over 90% with reference instruments for verified, reliable, clinical-grade accuracy.

Continuous Monitoring

Local and cloud data storage safeguard environmental records, ensuring no loss during power or network interruptions.

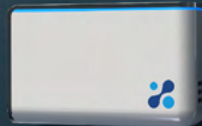




aethair



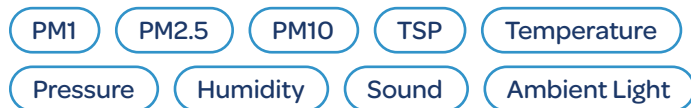
SCAN THE QR CODE TO SEE OUR
Aethair HQ Air Quality



aethair PRO | Advanced Air Quality Monitoring

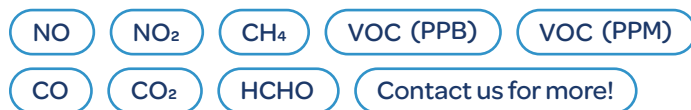
Professional-grade monitoring, built for adaptability. With hot-swappable gas sensors and the versatility to operate both indoors and outdoors, Aethair PRO delivers real-time data and verified compliance across any application.

Built-In Sensors



Gas Sensors

Choose two gas sensors to include in your setup. All sensors are pre-calibrated and hot-swappable.



Advanced Healthcare Monitoring

Aethair PRO delivers reference-grade accuracy in a compact, adaptable system designed for **hospitals, laboratories, and clinical research environments**. With flexible mounting and customizable options such as differential pressure and application-specific gas monitoring, it supports fixed, mobile, and critical environments where continuous oversight is essential. Built for healthcare compliance and clinical validation, Aethair PRO transforms continuous environmental data into defensible reports and actionable insights.

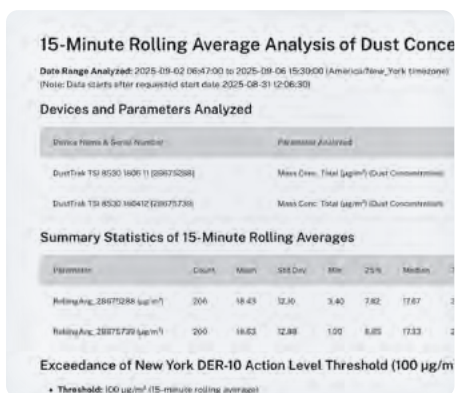
Aethair PRO sets the standard for precision and reliability in healthcare environmental monitoring.

environet | Data Monitoring & Management

Environet is Aethair's cloud platform for real-time data management and analysis. Trusted by healthcare and research institutions, it provides secure access to live & historical data, transforming it into report-ready intelligence that supports regulatory compliance and clinical decision-making.

AI-Powered Analytics

Turn complex data into insights. Ask questions, analyze large datasets, and simplify compliance



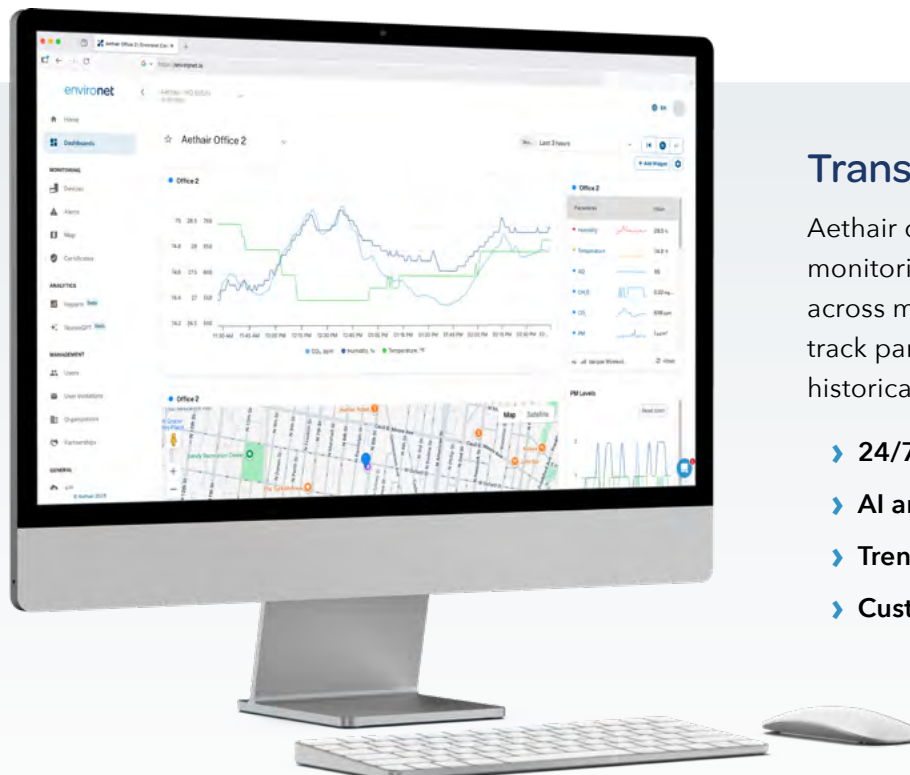
Compliance Made Simple

Quickly generate custom, professional reports. Aethair makes reporting simple, accurate, and fast.



Active Risk Management

AI insights, analytics, and real-time alerts identify risks early. Visualize trends, anticipate issues, and act fast.



Transforming Environmental Data

Aethair delivers an advanced platform for monitoring and managing environmental data across medical and healthcare facilities. Users can track parameters, visualize trends, and review full historical records for any device.

- › 24/7 access to real-time conditions
- › AI analysis and reporting tools
- › Trend visualization for critical environments
- › Customizable alerts for safety thresholds

Dashboards and Public Displays

Make air quality conditions clear and accessible. These optional dashboards are Powered by verified, real-time data from Aethair IAQ and Aethair PRO, helping healthcare teams build trust, support compliance, and demonstrate active environmental management.

Displays For Every Location

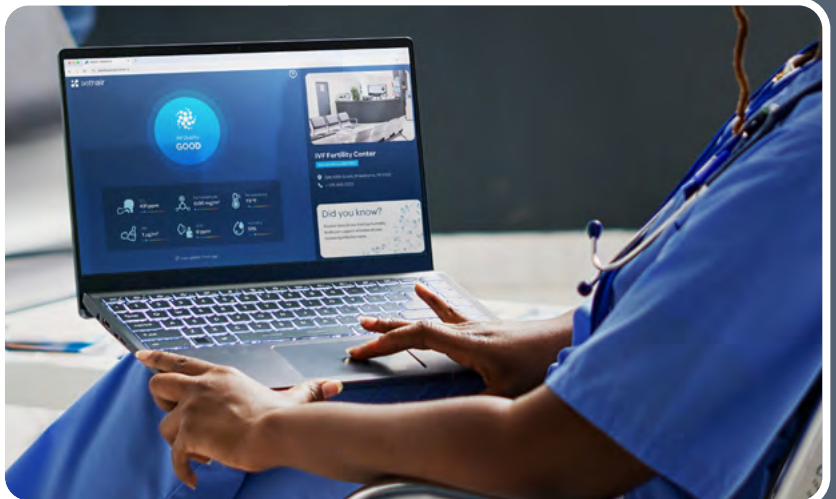
Ideal for waiting areas, patient rooms, laboratories, and staff spaces, Aethair Dashboards present live air quality and key health indicators, reinforcing a commitment to health, transparency, and continuous care quality.

Mobile & Online Displays

Public dashboards are available online and via QR code for instant mobile access. Patients, visitors, and staff can view current air quality anytime, providing confidence that every space is monitored for safety and well-being.

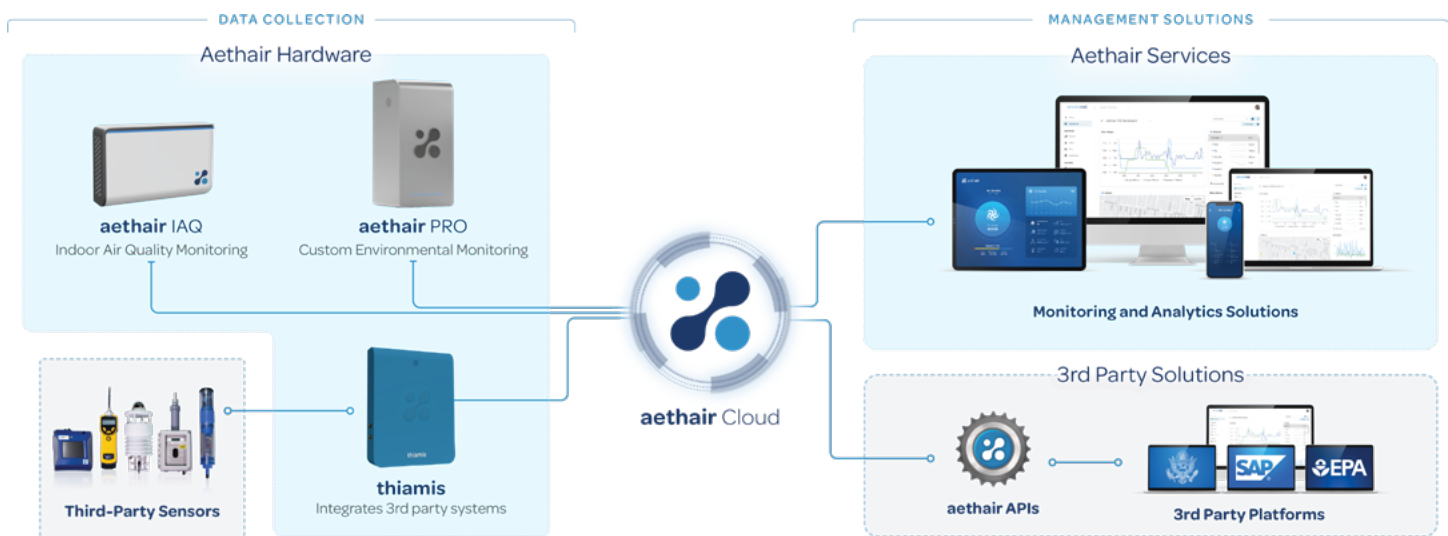


See the live
air quality at
Aethair HQ



Integrated & Seamless

Aethair unifies hardware, cloud, AI, and analytics into one secure platform where data is encrypted and verified end-to-end, ensuring integrity and minimizing human error. The result is an integrated infrastructure that simplifies environmental management, builds trust in every dataset, and enables confident, data-driven action anywhere.



The Trusted Environmental Data Platform

Aethair is trusted worldwide for mission-critical environmental monitoring. As a global platform, it integrates Aethair IAQ, Aethair PRO, and third-party devices (connected through Thiamis) to deliver verified, real-time intelligence from any location. Built on advanced security, end-to-end encryption, and proven data integrity, Aethair provides the reliability, transparency, and control demanded across enterprise, government, and defense sectors. With over a decade of experience, Aethair sets the benchmark for secure, scalable environmental intelligence.





How can we help?

If you would like to find out more about how we can help you, please give us a call or send us an email.

+1 (267) 225-8487

sales@aethair.io

aethair.io